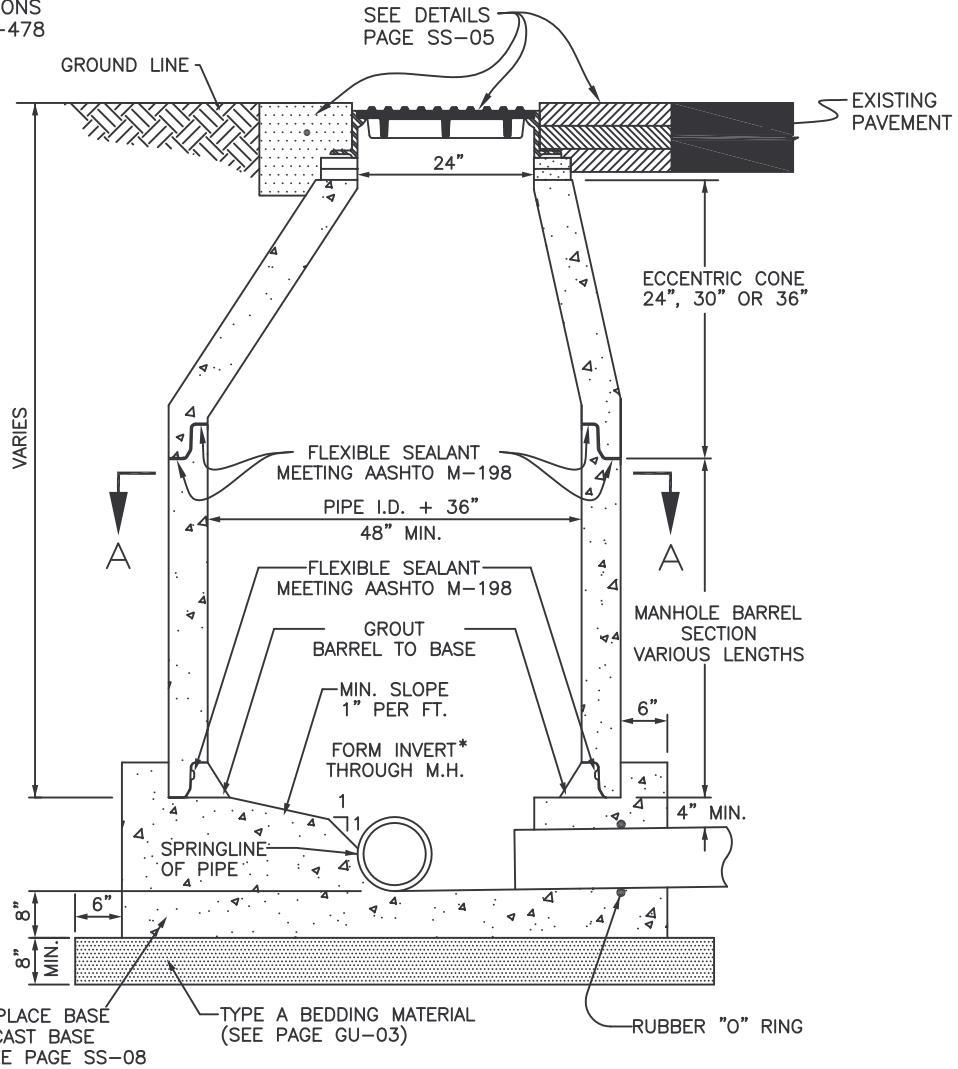
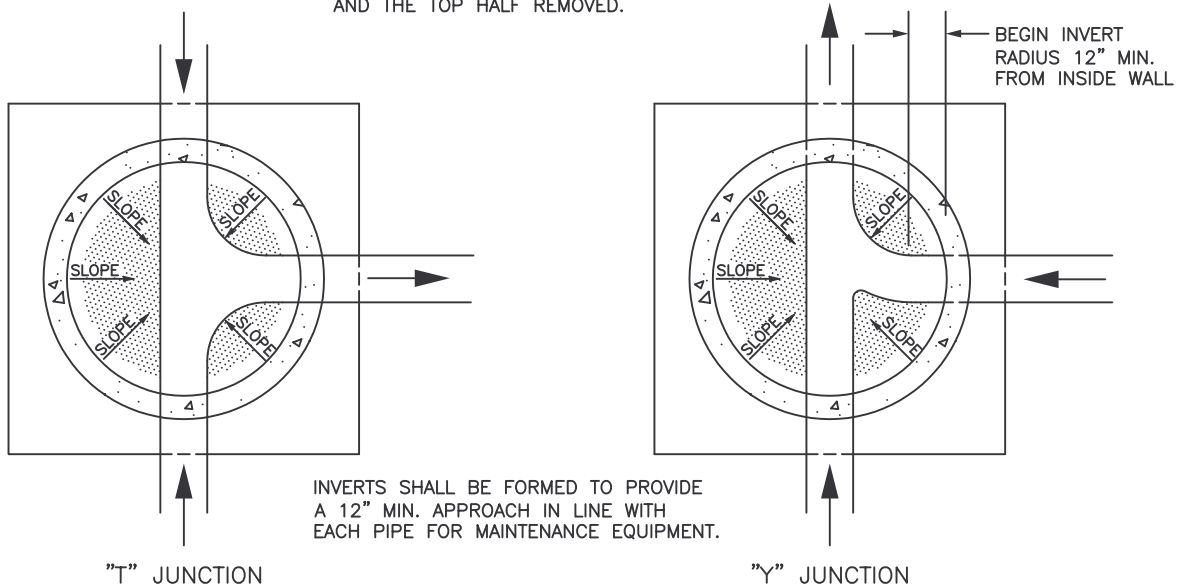


ALL PRECAST MANHOLE SECTIONS SHALL CONFORM TO ASTM C-478 OR AASHTO M-199



\* FOR IN LINE MANHOLES THE PIPE MAY BE INSTALLED THROUGH THE MANHOLE BASE AND THE TOP HALF REMOVED.



SECTION A-A

STANDARD MANHOLE - CAST IN PLACE BASE



CLIFTON SANITATION DISTRICT

STANDARD SANITARY SEWER DETAIL

APPROVED: DN  
 REVISED: FEB. 2007  
 DRAWN: TLT

PAGE SS-02