

Ground Breaking for New Clifton Regional Wastewater Treatment Facility

Clifton Sanitation District No. 2 held a ground breaking ceremony on December 4, 2006 for the new CRWWTF. This facility, scheduled to be operational in late 2008, replaces three existing lagoon systems and will dramatically improve the quality of the water discharged to the Colorado River. The new plant will have the capacity to treat 2.5 million gallons of wastewater per day – a 20% increase over the existing capacity – and is designed to be expanded to treat up to 4.5 million gallons of wastewater per day. The new site will combine operations, maintenance and administration in one location.

The facility was designed by Rothberg, Tamburini, & Winsor, Inc., Denver, Colorado and Alder Construction Company, Salt Lake City, Utah is the general contractor.

The new plant will consist of a headworks, oxidation ditches, clarifiers, ultra-violet disinfection, solids processing facilities and a new District administration and maintenance facility. The design incorporates automated technology for monitoring and operating the entire facility at the equipment, or



from a single computer at the facility or remotely from anywhere via telecommunication with the plant. In the event power is interrupted, the plant is equipped with a backup power system to maintain essential systems until permanent power is restored. The new facility will significantly reduce the ammonia concentration in the wastewater to provide a better aquatic habitat for fish and other species in the Colorado River

ecosystem. The final effluent quality will meet the latest Environmental Protection Agency and the Colorado Department of Public Health and Environment permit requirements and regulations.

Offsite Improvements

The offsite improvements component of the project will install the infrastructure necessary to connect the lagoon systems to the new plant, address the growth in our area, decommission three lagoon systems, reclaim the lagoon sites, replace aging infrastructure and upgrade facilities as required to meet the needs of our growing community.

- Installed 11,500 feet of new 27 inch interceptor line, completed in 2005-06 at a cost of \$1.4 million ➔



Breaking ground for the new CRWWTF are (left to right):

- Replace and upgrade 8,400 feet of existing pipe, currently in progress to be completed in spring of 2007 at an estimated cost of \$1.8 million
- Decommission and restore the CSD #2 East lagoon and CSD #1 lagoon systems by early 2007. The West lagoon system is to be completed in early 2009 after startup of the new plant. Estimated cost: \$1.75 million.

Construction Facts

The new CRWWTF is the first wastewater treatment facility to meet the new federally mandated ammonia discharge requirements for the designated section of the Colorado River that has been listed as "critical habitat" for the Colorado pikeminnow, razorback sucker, bonytail and humpback chub.

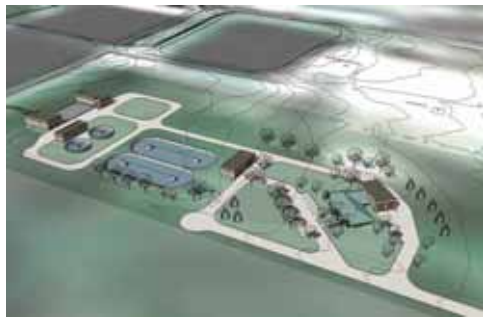
- Excavation – 17,000 cubic yards

- Fill – 27,000 cubic yards
- Asphalt – 8,300 square yards
- Concrete – 6,000 cubic yards
- Rebar – 450,000 lbs
- Site piping – Over 10,000 feet (4-30 inch diameter)
- SCADA System:

There will be four main processors that gather information directly from the plant instrumentation and sub processors located throughout the plant.

Information is retrieved and sent via hundreds of Inputs/Outputs that constantly monitor and control plant operations. All information is delivered to the plant operations staff at the plant via human-machine interface (HMI). Plant operations staff will have the ability to retrieve data and input operational control parameters via process control screens on the HMI. If plant disruptions occur, alarms will be sent to the HMI and called out via telecommunications to the operations staff.

- Valves – Over 200 major valves. Major valves include those over 4-inch diameter and those that have a significant impact on the process such as electrical solenoid valves. Size range from 1- 30 inches.
- Equipment Horsepower – over 1,000 HP
- 59% of project funded by district reserves



NEW REGIONAL FACILITY & ADMINISTRATIVE OFFICE

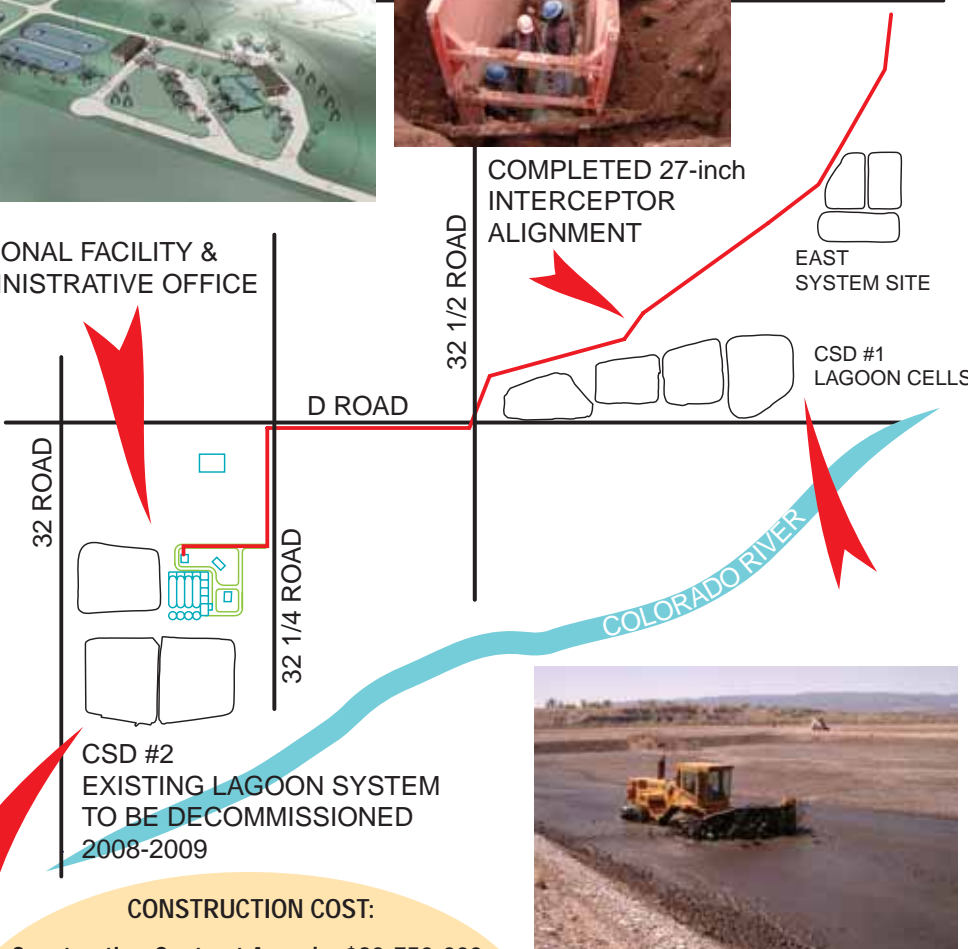


D 1/2 ROAD

COMPLETED 27-inch INTERCEPTOR ALIGNMENT

EAST SYSTEM SITE

CSD #1 LAGOON CELLS



CSD #2 EXISTING LAGOON SYSTEM TO BE DECOMMISSIONED 2008-2009



CONSTRUCTION COST:

Construction Contract Award = \$20,750,000
 Engineering Design & Oversight = \$1,570,000

Total Project Cost = \$22,320,000

Since 2005, capital projects have all been on time and on budget

Project Schedule



Summer: Begin Design

Plant Design In Progress

Winter:

Interceptor Construction In Progress

2006

Spring:

Interceptor Completed

Summer:

Plant Design Completion

Fall/Winter:

Begin Plant Construction & Decommissioning of East Lagoons & CSD #1 Lagoons

2007



Construction in Progress



Rate Increases Announced

The monthly sewer service charges are based upon the cost to collect, treat and dispose of wastewater from one single family unit. Clifton Sanitation District #2 is an Enterprise Fund. It is self-supporting from its own revenue sources and does not receive any revenues from property taxes. Charges for collection and treatment of wastewater comprise the funds for operations, maintenance and debt service. Tap fee revenues received from new construction fund the capital expenses.

Sixty (60) percent of the cost of capital improvement projects are being financed with District revenues and grant funds. The remaining 40 percent will be financed through low-interest loans from the Colorado Rural Water and Power Development Authority.

The newsletter sent out in February 2006 announced there would be a three-step increase plan that scheduled the initial increase in April 2006 and the next succeeding years. The second rate increase will be effective January 1, 2007 and will be the most significant increase that will be imposed over the next two years.

The current monthly rate of \$12 per single family unit will be adjusted to \$20 per month. The third annual rate increase is not expected until late 2008 or early 2009. When the plant is fully operational in 2009 rates are estimated to be between \$23 and \$25 per month.

The District strives to provide wastewater service to customers at the lowest price possible, and must balance this with the needs of maintaining a quality sewer system and meeting the Federal and State requirements. The rate adjustment is necessary to cover the increasing costs of doing business and to continue providing quality sewer service to our community.

CSD #2 Revenue Sources

Tap Fees

Paid by New Development: \$5,250

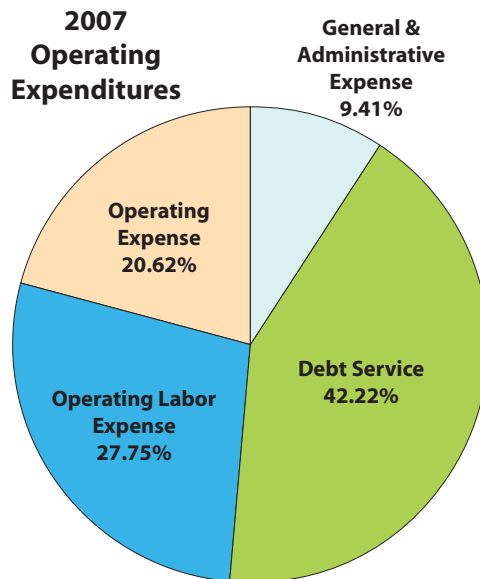
Plant Investment Fee (PIF) \$2,950 <i>Placed in reserve to pay for our new plant and for replacement of plant equipment.</i>	Capital Improvement Fee (CIF) \$2,300 <i>Placed in reserve to fund projects such as collection line upgrades and replacement.</i>
--	---

Monthly Service Fees

Currently \$20.00/month

Dedicated to operations, maintenance, and debt service. Clifton Sanitation District #2 does not assess a mill levy or collect property taxes.

Both Clifton Sanitation Districts have been working diligently to keep the overall costs down. With the support of the Mesa County Commissioners, the Districts have been awarded three separate Energy Impact Assistant Grants totalling \$2 million to help defray the capital improvement costs.



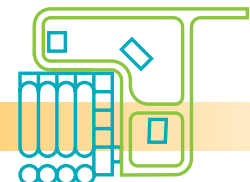
progress
 Fall/Winter: Milestone #1: Complete Administrative/Maintenance Building

2008

Summer/Fall: Construction Completion
 Fall/Winter: Decommissioning of West Lagoons

2009

Complete Reclamation of West Lagoons





PRSRT STD
US POSTAGE
PAID
Grand Junction,
CO
Permit #229

Clifton Sanitation District #2
P.O. Box 186
Clifton, CO 81520
(970) 434-7422

Consolidation of Clifton Sanitation District & Clifton Sanitation District #2

The rate payers of Clifton Sanitation District have voted to dissolve their district and consolidate services with Clifton Sanitation District #2. This arrangement provides the best alternatives and benefits for both Districts.

- protective of public health and the environment
- less expensive for the ratepayers
- this cost sharing will save both initial construction costs and long term operating costs for everyone
- eliminates the duplicate services
- improves the water quality to the critical habitat of the Colorado River
- the sewer service rates for all of the customers served by the new facility can be better controlled in the future

Web Site

Visit our Web site for the latest information regarding our wastewater treatment facility project as well as information about upcoming meetings, rates and services.



www.cliftonsanitation2.com

Questions/ Comments?

The staff and Board are excited about building your new regional WWTF. If you have any questions, comments, concerns or need more information about the project, please contact the District at 434-7422 or stop by the office at 3222 Hwy. 6&24 in Clifton. You may also submit comments on-line at our Web site.

We value your input and comments.